



TIMES SQUARE

Gerflor[®]
theflooringgroup

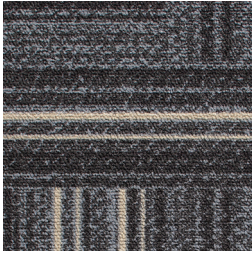


TIMES SQUARE

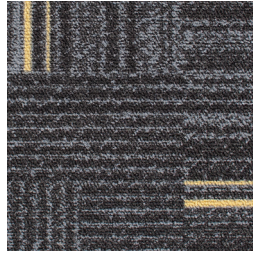
Times Square features a unique design in 10 contemporary colours. The range offers versatility and can be installed randomly to maximise creativity. Times Square is suitable for a wide range of environments including commercial, hospitality, retail, healthcare and education.

TIMES SQUARE

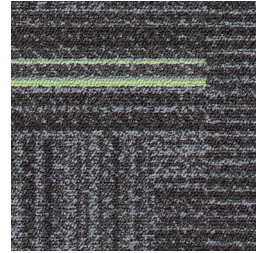
Colourways



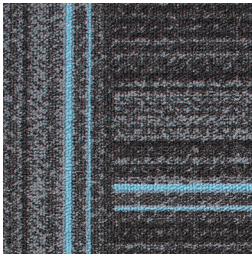
Natural 06602
LRV 3.80



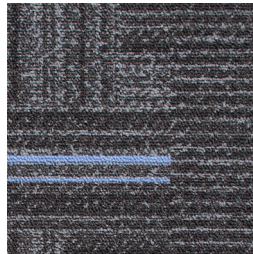
Yellow 06603
LRV 4.36



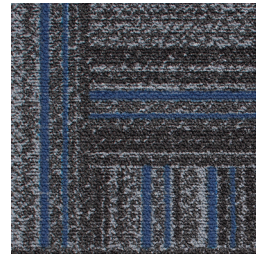
Lime 06606
LRV 4.98



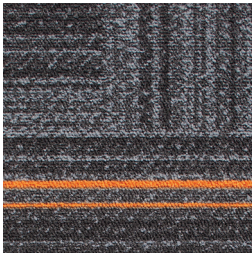
Light Blue 06608
LRV 5.28



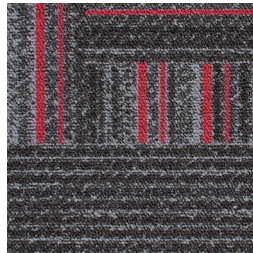
Lilac 06607
LRV 5.21



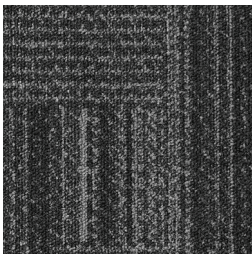
Dark Blue 06611
LRV 5.01



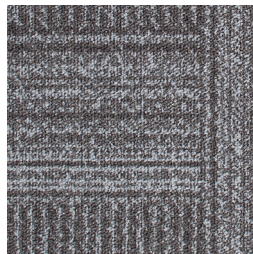
Orange 06604
LRV 4.56



Red 06605
LRV 4.51



Grey 06601
LRV 4.56



Light Grey 07700
LRV 7.67

Times Square features 6 unique designs in each colourway.



TIMES SQUARE
Tufted Loop Pile Carpet Tile



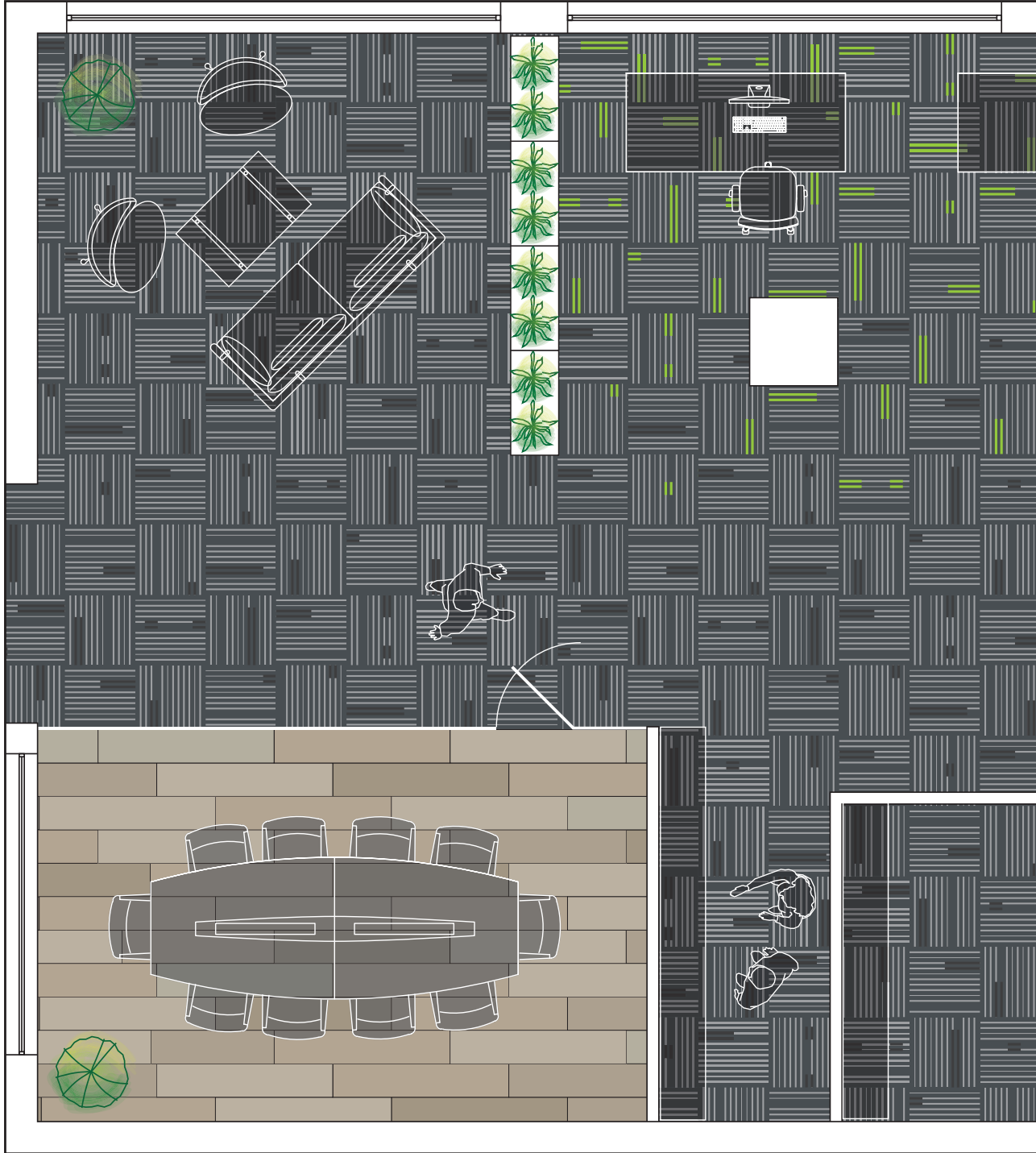


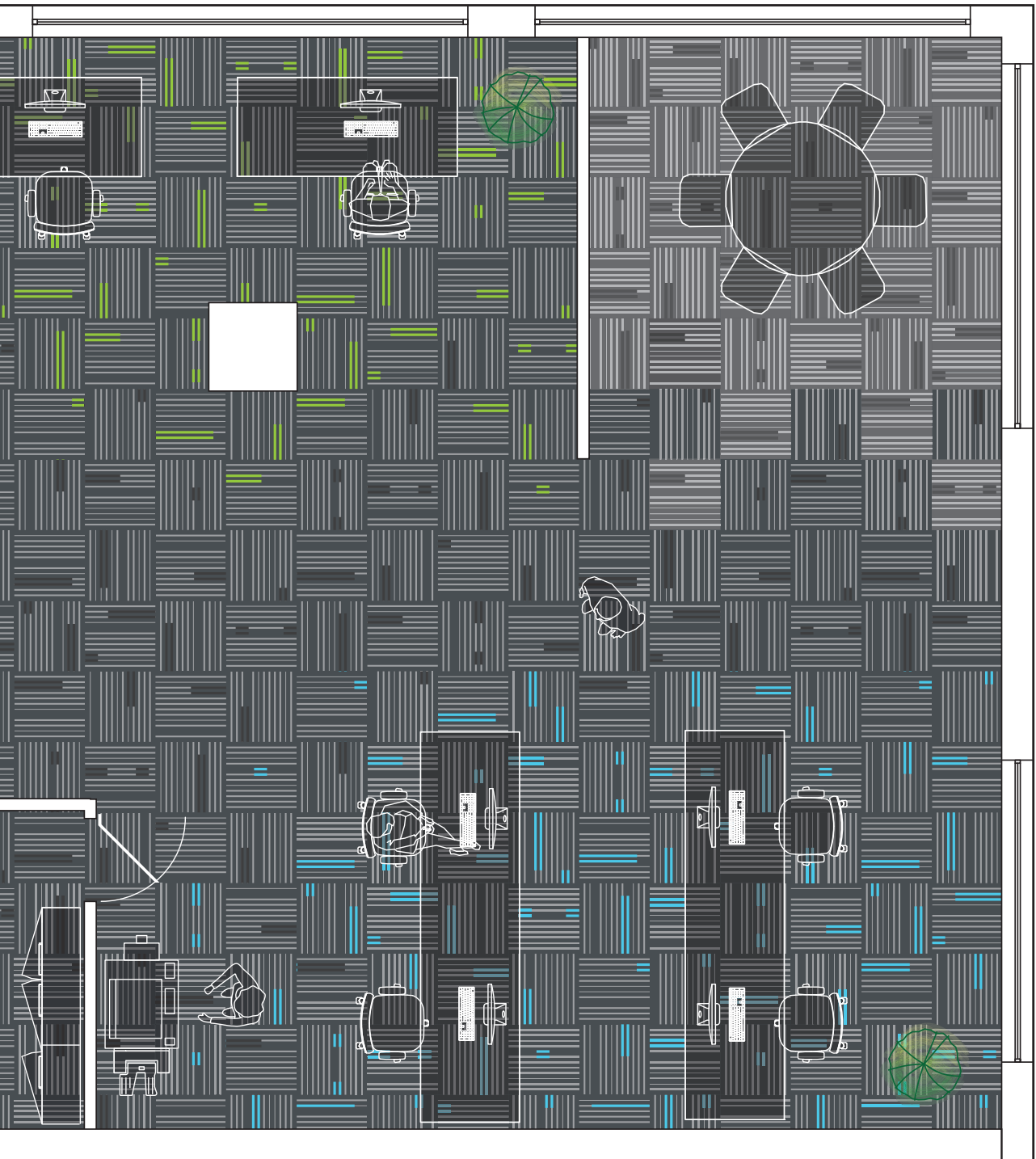





COMMERCIAL OFFICE FLOOR PLAN

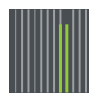
Times Square Tile






 Times Square
 Grey 06601
 (Installed random)


 Times Square
 Light Grey 07700
 (Installed random)


 Times Square
 Lime 06606
 (Installed random)


 Times Square
 Light Blue 06608
 (Installed random)



ACT
WITH
CE

Think
CUSTOMER

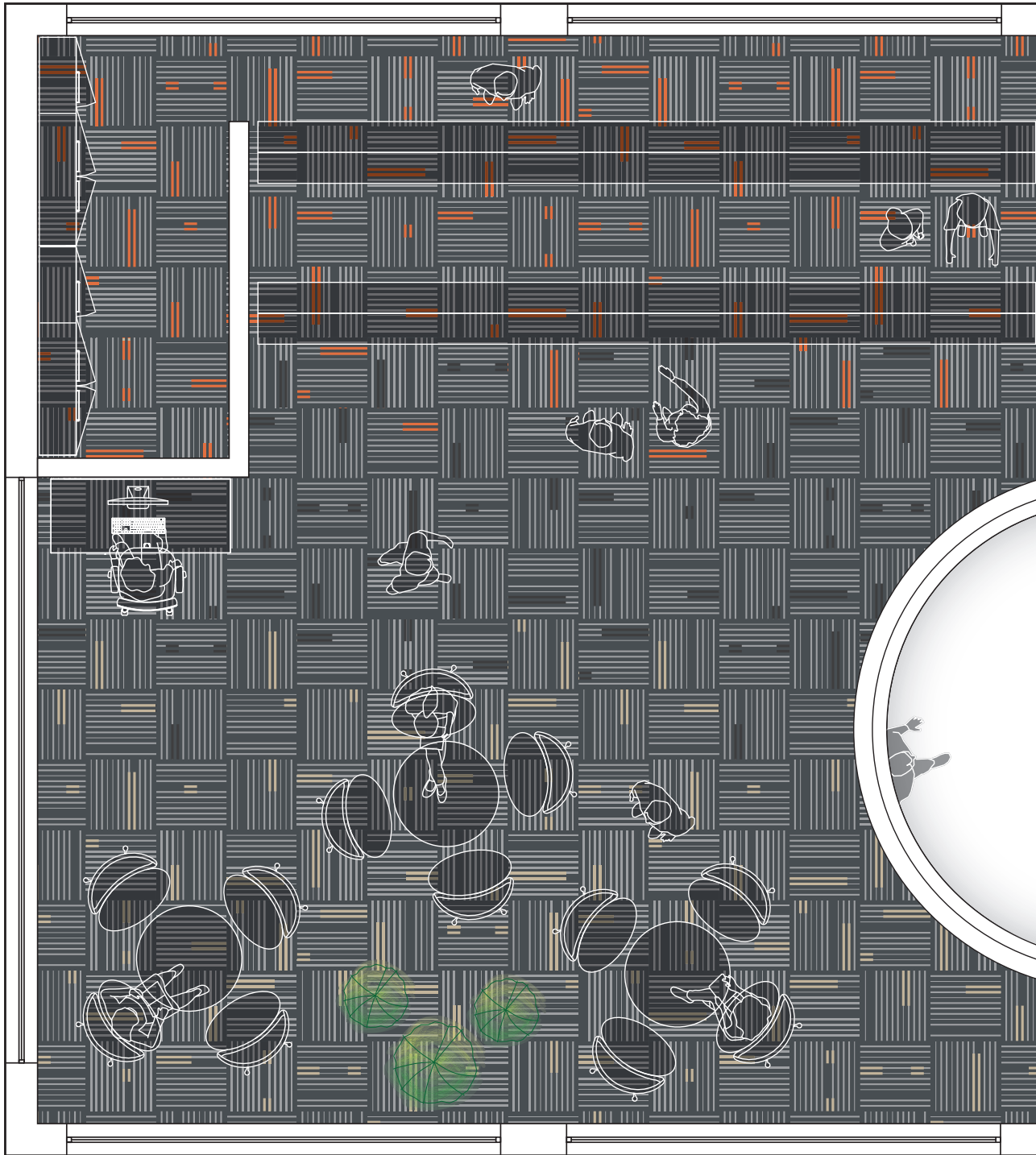
**BE
BRAVE**

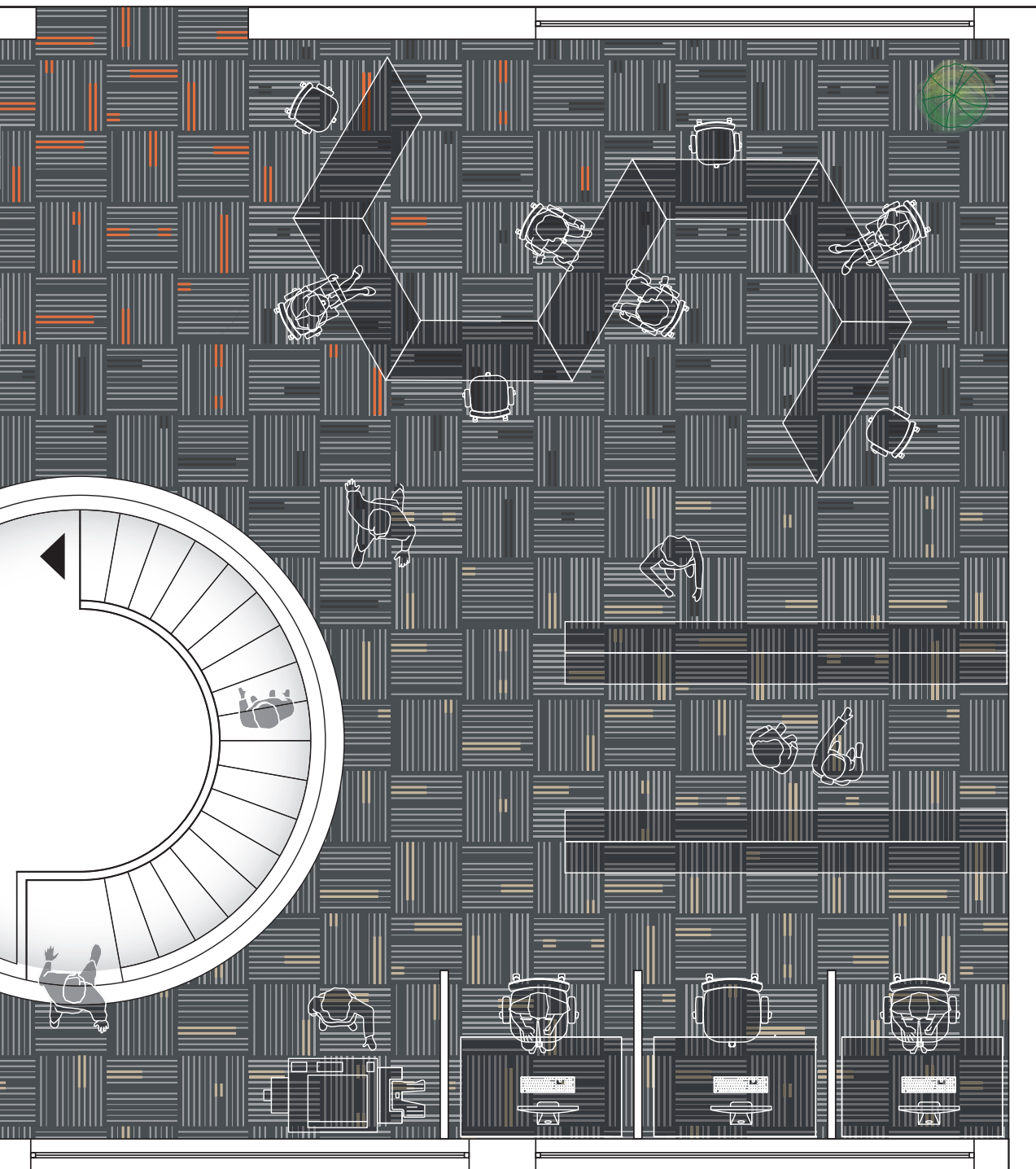
**TAKE
RESPONSIBILITY**




UNIVERSITY FLOOR PLAN

Times Square Tile






 Times Square
 Grey 06601
 (Installed random)


 Times Square
 Orange 06604
 (Installed random)


 Times Square
 Natural 06602
 (Installed random)





| |
|----------------------------|
| Uniclass Pr_35_57_11_62 |
| CI/SFB (43) Tn6 |

TIMES SQUARE

SPECIFICATION

| | |
|------------------------|---|
| Product Format | Tile |
| Product Dimensions | 500mm x 500mm |
| Product Construction | Tufted Loop Pile |
| Surface Yarn | 100% Econyl® Recycled Nylon |
| Total Carpet Weight | 3800 g/m ² |
| Tufted Pile Weight | 410 g/m ² |
| Gauge | 1/10" (39.4 per dm) |
| Stitches | 65.0/10cm |
| Primary Backing | Non-woven |
| Secondary Backing | WellBAC® Comfort 90% recycled cushion backing |
| Total Carpet Thickness | 8.6mm |
| Pile Height | 3.4mm |

PERFORMANCE SPECIFICATION

| | |
|--|--|
| Classification BS EN 1307 | Class 33 Heavy Commercial Use |
| Castor Chair BS EN 985 Test A | Class A - Intensive Use (r value 2.4) |
| Static Electricity ISO 6356 | Pass ≤ 2.0 kV Permanent Conductive Fibre |
| Impact Noise Rating BS EN ISO 354:2003 | 32dB |
| Sound Absorption BSEN ISO 354:2003 | 0.30 Class D |

FLAMMABILITY

| | |
|---------------|--------------|
| BS EN 13501-1 | Class Bfl-s1 |
|---------------|--------------|

ADDITIONAL INFORMATION

| |
|--|
| StainSmart® for soil release |
| 60% recycled content by total product weight |
| Available with TractionBack® on request |

WARRANTIES

| | |
|---------------------------|----------|
| Wear Warranty | 12 Year |
| Anti-static Warranty | Lifetime |
| Latents Defects Guarantee | |

ADHESIVES

| |
|--|
| For recommended adhesives contact Technical Services on 03332 412901 |
|--|



The information contained in this document is valid from 01/08/2024 and is subject to change at any time without notice.

Contact us to order free samples

UNITED KINGDOM: Gerflor Ltd
Park Green, Macclesfield,
Cheshire, SK11 7LZ
Tel: 03332 412901
E-mail: contractuk@gerflor.com
Visit: www.gerflor.co.uk

IRELAND: Gerflor Ltd
Ballybay Road, Carrickmacross,
Co. Monaghan, Republic of Ireland
Tel: +353 [0] 42 966 1431
E-mail: gerflorirl@gerflor.com
Visit: www.gerflor.ie

Gerflor[®]
theflooringgroup